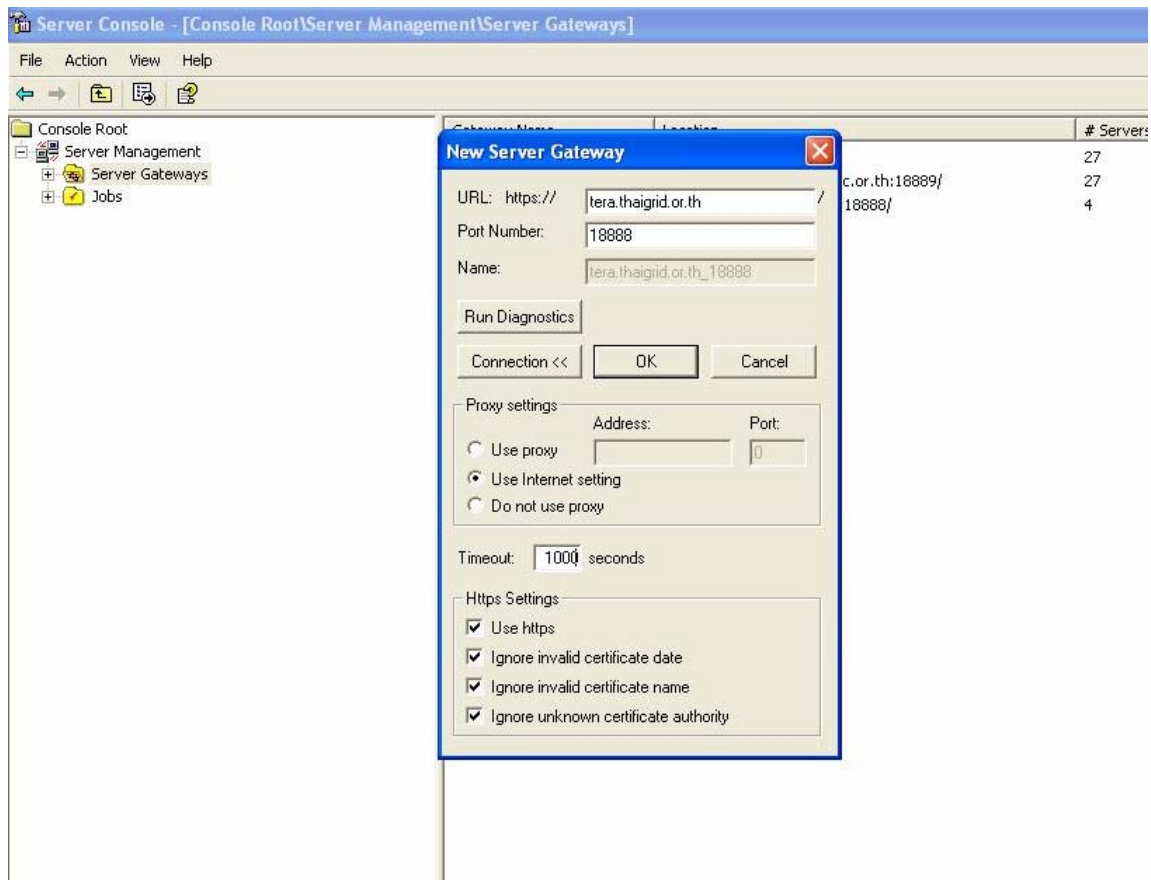


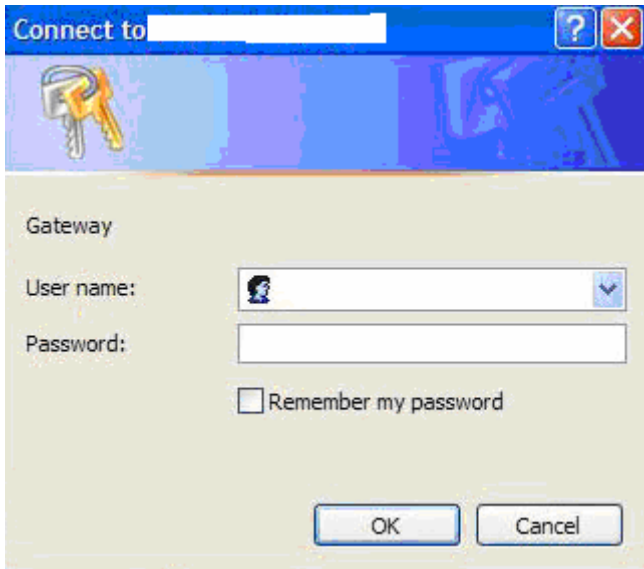
Setup server gateway

Before using Material Studio on ThaiGrid server, user needs to setup the server gateway. Please follows below step

- In the Window programs, there is an Accelrys Material Studio 4.1 menu click “Server Console”.
- In the left panel, right click on Server Gateways, select New and Server Gateway.
- In the popup “New Server Gateway” window, add “tera.thaigrid.or.th” in the URL box and 18888 in the Port Number box follows below figure.
- Click OK button to add new server gateway.



- The Gateway login will show up, add the User name and Password that you got from ThaiGrid administrator



- Open the server gateway tree and right click “tera.thaigrid.or.th_18888”, select Test Gateway, click Begin Test”.
- After the test is successfully executed, user could start for running MS Nanotechnology Consortium modules on ThaiGrid server.

